

HFSAB

H. FOLKE SANDELIN AB

CABLE REPAIR AND RECOVERY SYSTEM - CRRS



WORLD LEADING SUPPLIER TO THE CABLE INDUSTRY

HFSAB

H. FOLKE SANDELIN AB

TECHNICAL DATA

OPERATING SPEED 0-8 m/min
(depending on cable type and size)

CABLE DIAMETER RANGE 30-180 mm

PRODUCTION DATA

OUTER SHEATH MATERIALS

PVC, PE, HDPE, HDPE + ALUMINIUM METALLIC SHIELD

MAX THICKNESS 6 mm
MIN THICKNESS 1 mm
THICKNESS ALUMINIUM BONDED METALLIC SCREEN =<0,2 mm

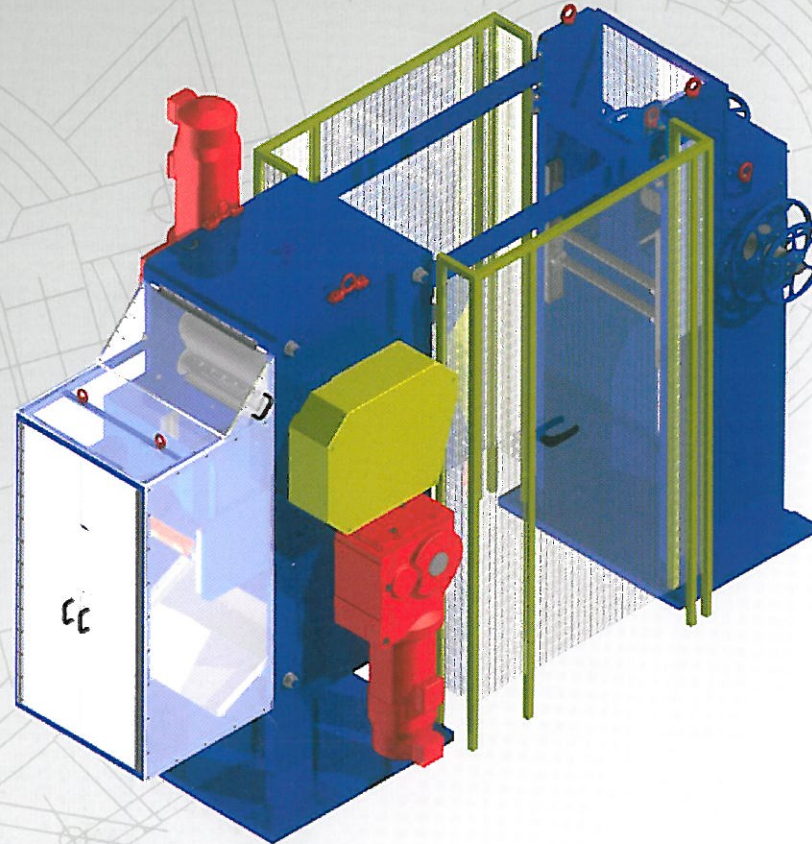
LEAD SHEATH

MAX THICKNESS 6 mm
MIN THICKNESS 1 mm

INSULATION (round constructions only)

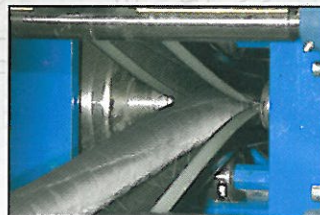
MAX THICKNESS 25 mm
MIN THICKNESS 3 mm

- Remove an outer jacket of PE, PVC, HDPE, etc without any damage to the cable layer below it, thus enabling the outer jacket to be re-applied and the cable repaired.
- Remove the metallic sheath of the cable without damaging the moisture expansion tapes or any other kind of cable layer below it, thus allow the re-application of the metallic sheath.
- Remove the triple XLPE insulation from the conductor core without damage to the expensive cable core and thus allow the conductor to be re-used, or sold at a higher value as bright copper scrap.
- CE Certified.
- Jointly or Individually adjustable slitting-knife depth.
- Normally no additional pulling equipment required.

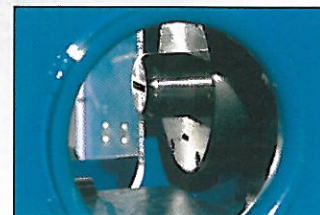


H. Folke Sandelin AB
Dynamovägen 7
Box 4086
SE-591 04 Motala
Sweden

Tel. +46 (0) 141 20 36 30
Fax. +46 (0) 141 20 36 39
E-mail. hfsab@hfsab.com
Web. www.hfsab.com



SLITTING HEAD



SLITTING HEAD



REMOVED MATERIAL



CUTTING SECTION